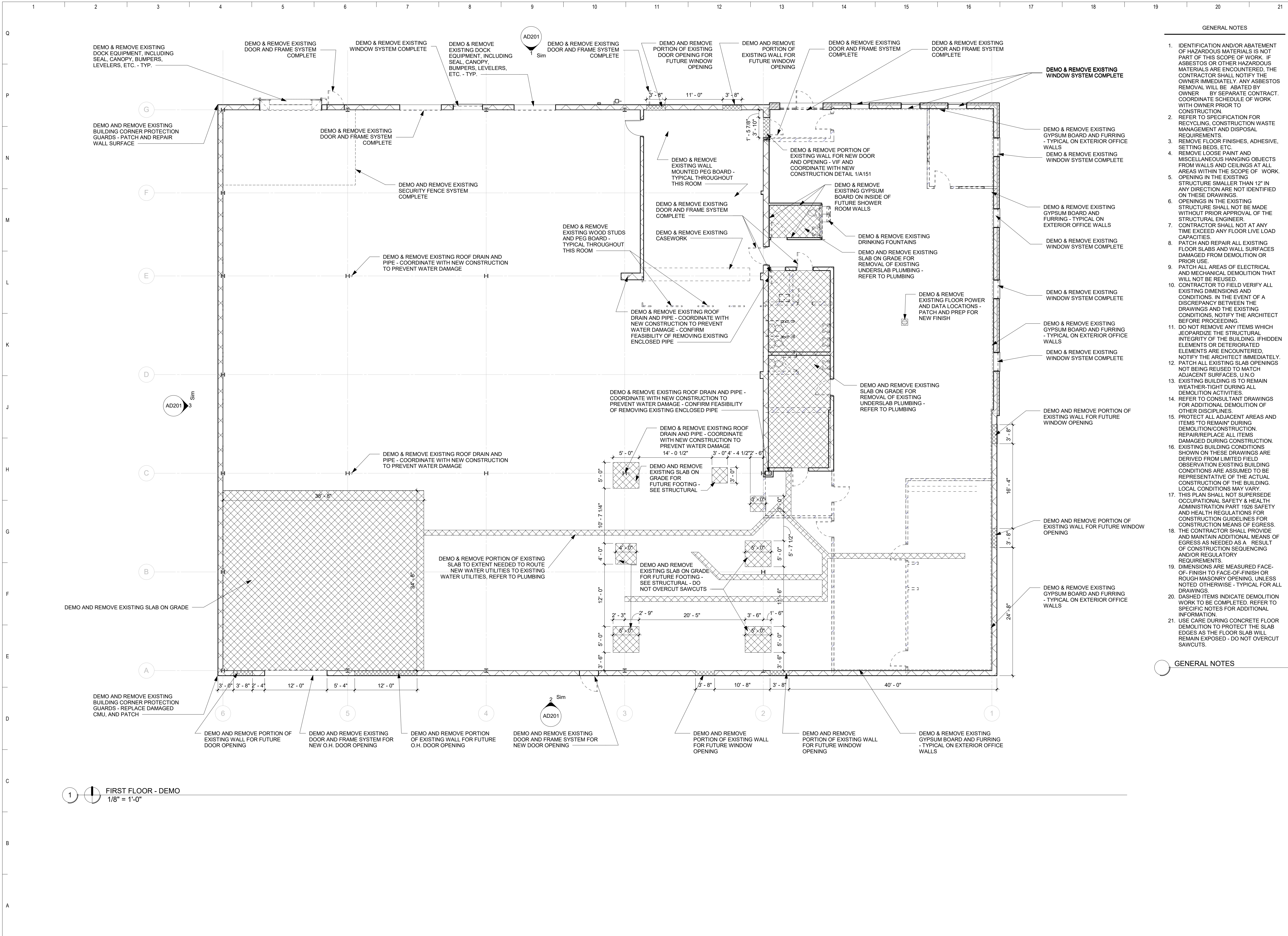


Session: C:\GTViewer\_Sessions\badger road-graybar.gts

City of Madison, WI - GIS/Mapping data

*Disclaimer: The City makes no representation about the accuracy of these records and shall not be liable for any damages incurred by: enjw*

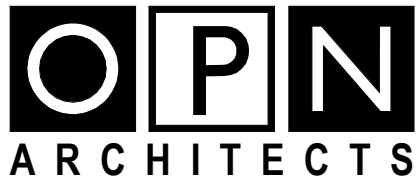




GENERAL NOTES

1. IDENTIFICATION AND/OR ABATEMENT OF HAZARDOUS MATERIALS IS NOT PART OF THIS SCOPE OF WORK. IF ASBESTOS OR OTHER HAZARDOUS MATERIALS ARE ENCOUNTERED, THE CONTRACTOR SHALL NOTIFY THE OWNER IMMEDIATELY. ANY ASBESTOS REMOVAL WILL BE ABATED BY OWNER BY SEPARATE CONTRACT. COORDINATE SCHEDULE OF WORK WITH OWNER PRIOR TO CONSTRUCTION.
2. REFER TO SPECIFICATION FOR RECYCLING, CONSTRUCTION WASTE MANAGEMENT AND DISPOSAL REQUIREMENTS.
3. REMOVE FLOOR FINISHES, ADHESIVE, SETTING BEDS, ETC.
4. REMOVE LOOSE PAINT AND MISCELLANEOUS HANGING OBJECTS FROM WALLS AND CEILINGS AT ALL AREAS WITHIN THE SCOPE OF WORK.
5. OPENING IN THE EXISTING STRUCTURE SMALLER THAN 12" IN ANY DIRECTION ARE NOT IDENTIFIED ON THESE DRAWINGS.
6. OPENINGS IN THE EXISTING STRUCTURE SHALL NOT BE MADE WITHOUT PRIOR APPROVAL OF THE STRUCTURAL ENGINEER.
7. CONTRACTOR SHALL NOT AT ANY TIME EXCEED ANY FLOOR LIVE LOAD CAPACITIES.
8. PATCH AND REPAIR ALL EXISTING FLOOR SLABS AND WALL SURFACES DAMAGED FROM DEMOLITION OR PRIOR USE.
9. PATCH ALL AREAS OF ELECTRICAL AND MECHANICAL DEMOLITION THAT WILL NOT BE REUSED.
10. CONTRACTOR TO FIELD VERIFY ALL EXISTING DIMENSIONS AND CONDITIONS. IN THE EVENT OF A DISCREPANCY BETWEEN THE DRAWINGS AND THE EXISTING CONDITIONS, NOTIFY THE ARCHITECT BEFORE PROCEEDING.
11. DO NOT REMOVE ANY ITEMS WHICH JEOPARDIZE THE STRUCTURAL INTEGRITY OF THE BUILDING. IF HIDDEN ELEMENTS OR DETERIORATED ELEMENTS ARE ENCOUNTERED, NOTIFY THE ARCHITECT IMMEDIATELY.
12. PATCH ALL EXISTING SLAB OPENINGS NOT BEING REUSED TO MATCH ADJACENT SURFACES, U.N.O.
13. EXISTING BUILDING IS TO REMAIN WEATHER-TIGHT DURING ALL DEMOLITION ACTIVITIES.
14. REFER TO CONSULTANT DRAWINGS FOR ADDITIONAL DEMOLITION OF OTHER DISCIPLINES.
15. PROTECT ALL ADJACENT AREAS AND ITEMS TO REMAIN DURING DEMOLITION/CONSTRUCTION. REPAIR/REPLACE ALL ITEMS DAMAGED DURING CONSTRUCTION.
16. EXISTING BUILDING CONDITIONS SHOWN ON THESE DRAWINGS ARE DERIVED FROM LIMITED FIELD OBSERVATION EXISTING BUILDING CONDITIONS ARE ASSUMED TO BE REPRESENTATIVE OF THE ACTUAL CONSTRUCTION OF THE BUILDING. LOCAL CONDITIONS MAY VARY.
17. THIS PLAN SHALL NOT SUPERSEDE OCCUPATIONAL SAFETY & HEALTH ADMINISTRATION PART 1926 SAFETY AND HEALTH REGULATIONS FOR CONSTRUCTION GUIDELINES FOR CONSTRUCTION MEANS OF EGRESS.
18. THE CONTRACTOR SHALL PROVIDE AND MAINTAIN ADDITIONAL MEANS OF EGRESS AS NEEDED AS A RESULT OF CONSTRUCTION SEQUENCING AND/OR REGULATORY REQUIREMENTS.
19. DIMENSIONS ARE MEASURED FACE-OF-FINISH TO FACE-OF-FINISH OR ROUGH MASONRY OPENING, UNLESS NOTED OTHERWISE - TYPICAL FOR ALL DRAWINGS.
20. DASHED ITEMS INDICATE DEMOLITION WORK TO BE COMPLETED. REFER TO SPECIFIC NOTES FOR ADDITIONAL INFORMATION.
21. USE CARE DURING CONCRETE FLOOR DEMOLITION TO PROTECT THE SLAB EDGES AS THE FLOOR SLAB WILL REMAIN EXPOSED - DO NOT OVERCUT SAWCUTS.

GENERAL NOTES



CEDAR RAPIDS  
DES MOINES  
MADISON

OPN ARCHITECTS  
301 NORTH BROOM S-TREET,  
SUITE 100  
MADISON, WI 53703  
608-819-0260 PHONE  
608-819-0261 FAX  
www.opnarchitects.com  
opn@opnarchitects.com

All reports, plans, specifications, computer files, field data, notes and other documents and instruments prepared by OPN Architects, Inc. are instruments of service and shall remain the property of OPN Architects, Inc. OPN Architects, Inc. shall retain all common law, statutory and other reserved rights, including the copyright thereto.

© 2016 OPN Architects, Inc.

Owner  
MADISON PUBLIC LIBRARY

201 W Mifflin St  
Madison, WI 53703

Project  
Madison Public Library  
Maintenance & Support  
Center Remodel  
1301 West Badger Road  
Madison, WI 53713

General Contractor

Consultants

CIVIL ENGINEER  
Snyder & Associates, Inc.  
5010 Voges Road  
Madison, WI 53718  
P. 608.838.0444

STRUCTURAL ENGINEER  
KJWW Engineering Consultants  
1800 Deming Way  
Middleton, WI 53562  
P. 608.223.9600

MECHANICAL ENGINEER  
KJWW Engineering Consultants  
1800 Deming Way  
Middleton, WI 53562  
P. 608.223.9600

ELECTRICAL ENGINEER  
KJWW Engineering Consultants  
1800 Deming Way  
Middleton, WI 53562  
P. 608.223.9600

Key Plan

Sheet Issue Date

Bid Set 12/09/2016

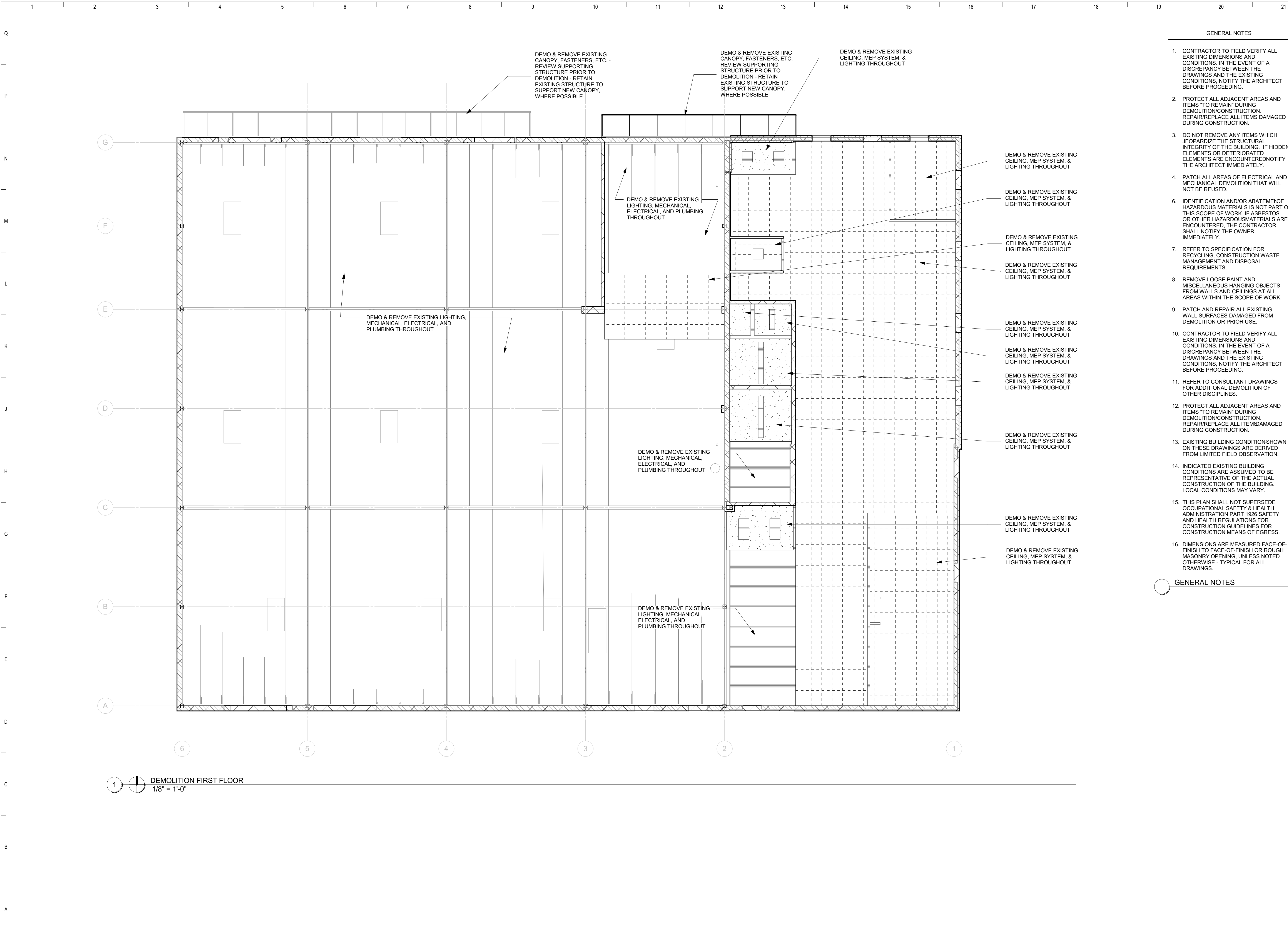
Previous Issue Dates

Revision Dates

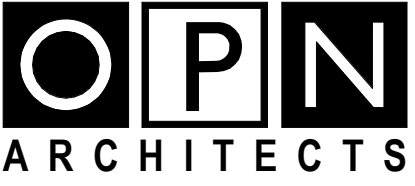
Drawing  
DEMOLITION FLOOR  
PLAN

OPN Project No. 15617000

AD101



- GENERAL NOTES
1. CONTRACTOR TO FIELD VERIFY ALL EXISTING DIMENSIONS AND CONDITIONS. IN THE EVENT OF A DISCREPANCY BETWEEN THE DRAWINGS AND THE EXISTING CONDITIONS, NOTIFY THE ARCHITECT BEFORE PROCEEDING.
  2. PROTECT ALL ADJACENT AREAS AND ITEMS "TO REMAIN" DURING DEMOLITION/CONSTRUCTION. REPAIR/REPLACE ALL ITEMS DAMAGED DURING CONSTRUCTION.
  3. DO NOT REMOVE ANY ITEMS WHICH JEOPARDIZE THE STRUCTURAL INTEGRITY OF THE BUILDING. IF HIDDEN ELEMENTS OR DETERIORATED ELEMENTS ARE ENCOUNTERED, NOTIFY THE ARCHITECT IMMEDIATELY.
  4. PATCH ALL AREAS OF ELECTRICAL AND MECHANICAL DEMOLITION THAT WILL NOT BE REUSED.
  6. IDENTIFICATION AND/OR ABATEMENT OF HAZARDOUS MATERIALS IS NOT PART OF THIS SCOPE OF WORK. IF ASBESTOS OR OTHER HAZARDOUS MATERIALS ARE ENCOUNTERED, THE CONTRACTOR SHALL NOTIFY THE OWNER IMMEDIATELY.
  7. REFER TO SPECIFICATION FOR RECYCLING, CONSTRUCTION WASTE MANAGEMENT AND DISPOSAL REQUIREMENTS.
  8. REMOVE LOOSE PAINT AND MISCELLANEOUS HANGING OBJECTS FROM WALLS AND CEILINGS AT ALL AREAS WITHIN THE SCOPE OF WORK.
  9. PATCH AND REPAIR ALL EXISTING WALL SURFACES DAMAGED FROM DEMOLITION OR PRIOR USE.
  10. CONTRACTOR TO FIELD VERIFY ALL EXISTING DIMENSIONS AND CONDITIONS. IN THE EVENT OF A DISCREPANCY BETWEEN THE DRAWINGS AND THE EXISTING CONDITIONS, NOTIFY THE ARCHITECT BEFORE PROCEEDING.
  11. REFER TO CONSULTANT DRAWINGS FOR ADDITIONAL DEMOLITION OF OTHER DISCIPLINES.
  12. PROTECT ALL ADJACENT AREAS AND ITEMS "TO REMAIN" DURING DEMOLITION/CONSTRUCTION. REPAIR/REPLACE ALL ITEMS DAMAGED DURING CONSTRUCTION.
  13. EXISTING BUILDING CONDITIONS SHOWN ON THESE DRAWINGS ARE DERIVED FROM LIMITED FIELD OBSERVATION.
  14. INDICATED EXISTING BUILDING CONDITIONS ARE ASSUMED TO BE REPRESENTATIVE OF THE ACTUAL CONSTRUCTION OF THE BUILDING. LOCAL CONDITIONS MAY VARY.
  15. THIS PLAN SHALL NOT SUPERSEDE OCCUPATIONAL SAFETY & HEALTH ADMINISTRATION PART 1926 SAFETY AND HEALTH REGULATIONS FOR CONSTRUCTION GUIDELINES FOR CONSTRUCTION MEANS OF EGRESS.
  16. DIMENSIONS ARE MEASURED FACE-OF-FINISH TO FACE-OF-FINISH OR ROUGH MASONRY OPENING, UNLESS NOTED OTHERWISE - TYPICAL FOR ALL DRAWINGS.
- GENERAL NOTES



OPN ARCHITECTS  
CEDAR RAPIDS  
DES MOINES  
MADISON

OPN ARCHITECTS  
301 NORTH BROOM STREET,  
SUITE 100  
MADISON, WI 53703  
608-819-0260 PHONE  
608-819-0261 FAX  
www.opnarchitects.com  
opn@opnarchitects.com

All reports, plans, specifications, computer files, field data, notes and other documents and instruments prepared by OPN Architects, Inc., as instruments of service shall remain the property of OPN Architects, Inc. OPN Architects, Inc. shall retain all common law, statutory and other reserved rights, including the copyright thereto.

© 2016 OPN Architects, Inc.

Owner  
MADISON PUBLIC LIBRARY

201 W Mifflin St  
Madison, WI 53703

Project  
Madison Public Library  
Maintenance & Support  
Center Remodel

1301 West Badger Road  
Madison, WI 53713

General Contractor

CIVIL ENGINEER  
Snyder & Associates, Inc.  
5010 Voges Road  
Madison, WI 53718  
P. 608.838.0444

STRUCTURAL ENGINEER  
KJWW Engineering Consultants  
1800 Deming Way  
Middleton, WI 53562  
P. 608.223.9600

MECHANICAL ENGINEER  
KJWW Engineering Consultants  
1800 Deming Way  
Middleton, WI 53562  
P. 608.223.9600

ELECTRICAL ENGINEER  
KJWW Engineering Consultants  
1800 Deming Way  
Middleton, WI 53562  
P. 608.223.9600

Key Plan

Sheet Issue Date  
Bid Set 12/09/2016

Previous Issue Dates

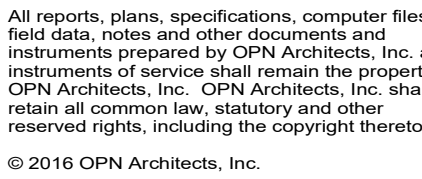
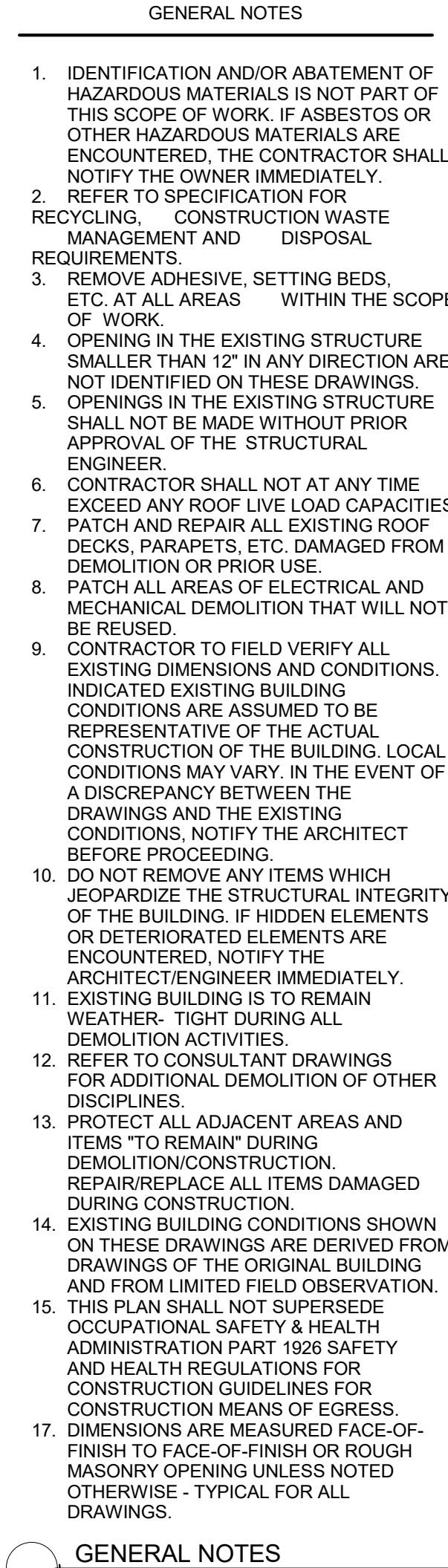
Revision Dates

Drawing  
DEMOLITION REFLECTED  
CEILING PLAN

OPN Project No. 15617000

AD121





Project  
Madison Public Library  
Maintenance & Support  
Center Remodel  
1301 West Badger Road  
Madison, WI 53713

**Consultants**

**CIVIL ENGINEER**  
Snyder & Associates, Inc.  
5010 Voges Road  
Madison, WI 53718  
P. 608.838.0444

**STRUCTURAL ENGINEER**  
KJWW Engineering Consultants  
1800 Deming Way  
Middleton, WI 53562  
P. 608.223.9600

**MECHANICAL ENGINEER**  
KJWW Engineering Consultants  
1800 Deming Way  
Middleton, WI 53562  
P. 608.223.9600

**ELECTRICAL ENGINEER**  
KJWW Engineering Consultants  
1800 Deming Way  
Middleton, WI 53562  
P. 608.223.9600

### Key Plan

Sheet Issue Date

Bid Set 12/09/2016

[illegible]

Drawing  
DEMOLITION ROOF PLAN

OPN Project No. **15617000**

# AD141

